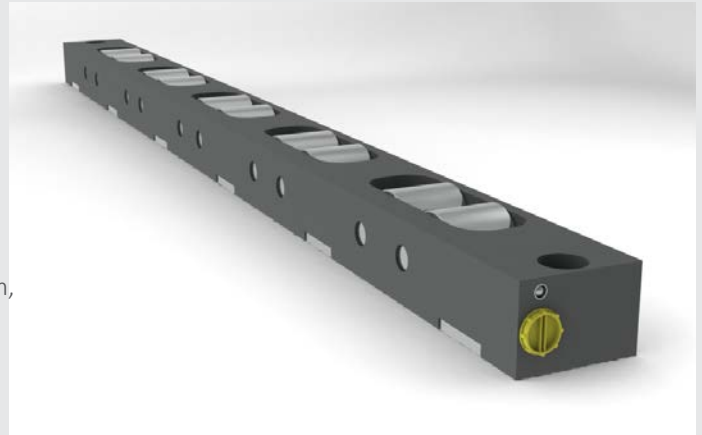


Heavy load hydraulic bar LGGH

for dies > 10 t



Specifications

- Very low rolling resistance
- Hydraulic lifting
- Can be mounted upside down with the rollers towards the bottom, on the outgoing bolster
- Recommended for dies weighing > 10 t
- Standard working temperature of up to 70 °C, 160 °C with Viton seals

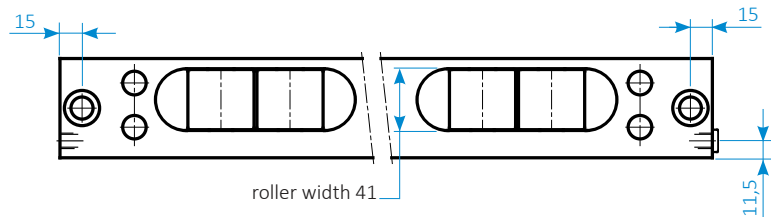
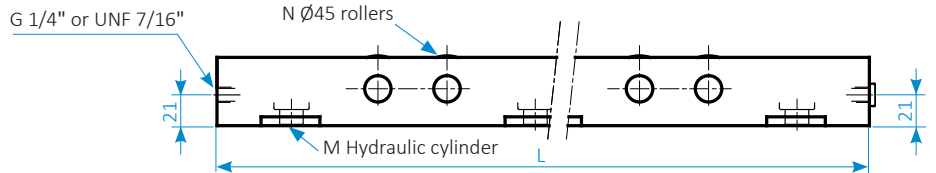
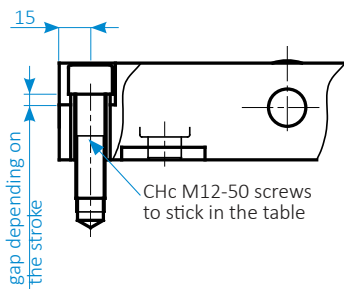
Specifications and dimensions

	LGGH 600	LGGH 950	LGGH 1300	LGGH 1650
Length (L - mm)	610	950	1290	1640
Lifting capacity (kN)	144	216	288	360
Static capacity (kN)	72	120	168	216
Max. working pressure (bar)	400	400	400	400
Number of pistons (M)	8	12	16	20
Max. oil volume (cm ³)	18	27	36	45
Max flow rate (l/mn)	2,88	4,32	5,7	7,2
Rollers (N)	6	10	14	18
Assembly distance (mm)	580	920	1260	1610
Weight (kg)	11,5	18	24	30,5
Stroke (C - mm)	adjustable up to 12,7 mm			

To calculate the dynamic load for each roller, please refer to sheet 010-00.

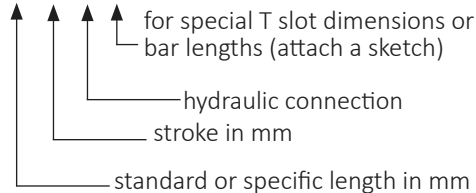
If no indication is given with the purchase order, we deliver G 1/4 " hydraulic connectors, UNF 7/16" on request.

All dimensions are in millimeters.

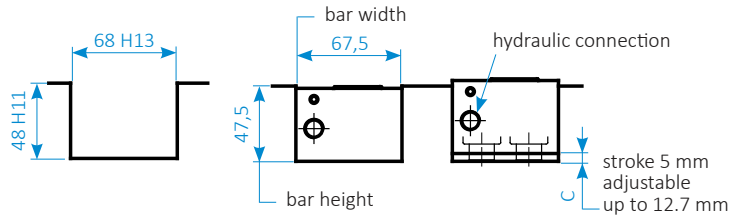


Purchase order reference

LGGH - L - C - Z - S



T Slot dimensions :



Examples : LGGH 950 - 10- G (standard model)

LGGH 1000- 12- UNF- S (specific model)

Special dimensions and rollers for speeds in excess of 100 mm/sec on request.

SERAPID France - Head Office

ZI Louis Delaporte, Zone Bleue, Voie F
F-76370 Rouxmesnil-Bouteilles | France
+33 (0)2 32 06 35 60
info-fr@serapid.com

SERAPID Ltd

Elm Farm Park, Great Green, Thurston,
Bury St Edmunds | IP31 3SH England
+44 (0)1359 233335
info-uk@serapid.com

SERAPID Deutschland GmbH

Wilhelm-Frank-Straße 30
D-97980 Bad Mergentheim | Germany
+49 (0)7931 9647-0
info-de@serapid.com

SERAPID USA INC.

34100 Mound Road
Sterling Heights MI 48310 | USA
+1 586 274 0774
info-us@serapid.com

SERAPID Singapore Pte Ltd

1 George Street #10-01
Singapore 049145 | Singapore
+65 9119 5890
info-sg@serapid.com